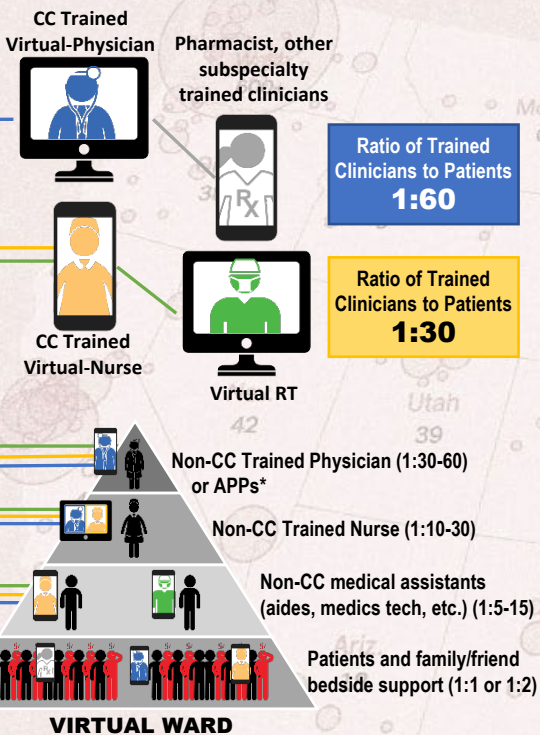


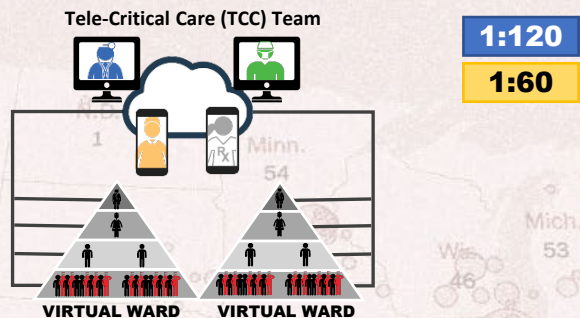
NATIONAL EMERGENCY TELECRITICAL CARE NETWORK

Tiered Staffing with Remote TCC Support

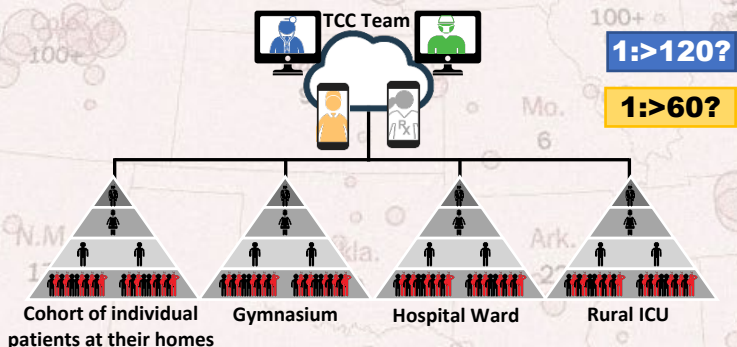
Phase I: Local Support



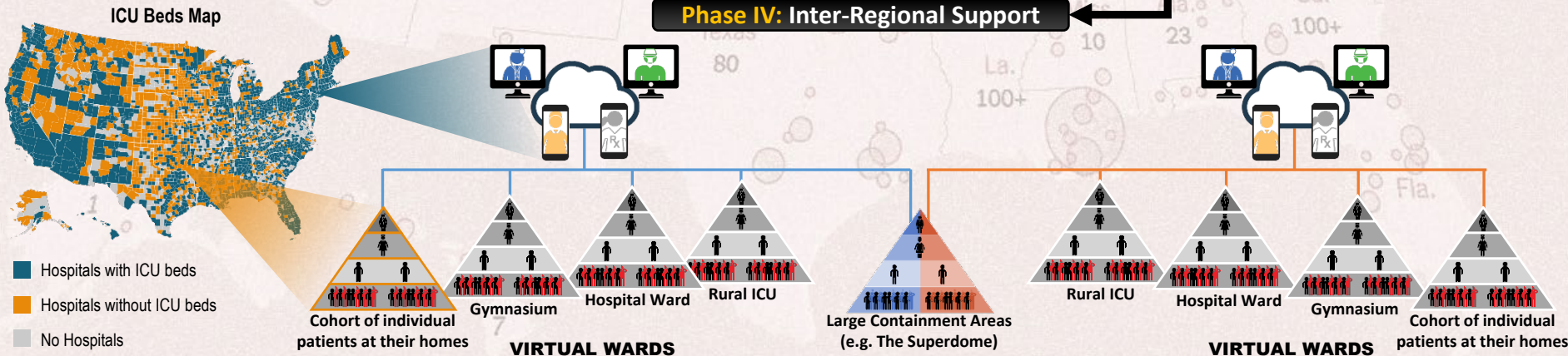
Phase II: Wide-Local Support



Phase III: Regional Support



Phase IV: Inter-Regional Support



Enabling Technologies:

- Cellular network/Mobile Devices
 - geolocation, passive sensors, antennae
- Elastic Cloud Computing
- IoT
- Big Data and Artificial Intelligence
- Augmented Reality

Complementary efforts:

- Incorporate additional sensors (wearables)
- Remote control of devices (ventilators/IV Pumps)
- Automated logistics/supply
- Automating devices/systems
- Device interoperability (plug and play)
- EHR Integration
- Robotic procedural support

*APPs (Advanced Practice Providers: PAs, NPs, CRNAs etc.) – some are CC Trained and some are Non-CC Trained.